

Marel StreamLine

Flexible and intelligent trimming concept



- Increased yield, throughput and quality
- Real-time performance monitoring
- Cost-effective with short payback time
- Compact and easy to clean



Monitor, measure, maximise

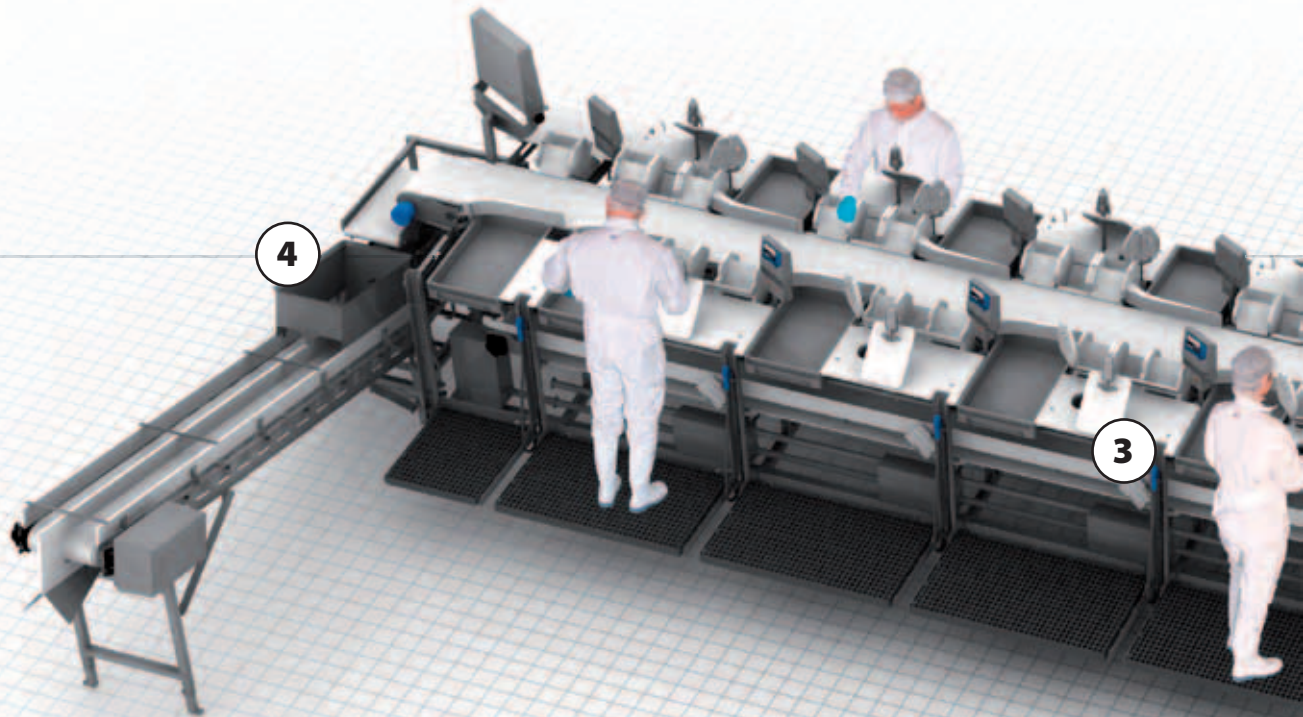
StreamLine, the innovative new poultry processing line from Marel, combines a unique set of features.

- Extremely flexible and can be used for most deboning and trimming operations. With no limits on the weight distribution of the birds fed onto the line, advance grading is not required to achieve maximum yield.
- Integrates seamlessly with Innova, Marel's state-of-the-art production management software, which monitors and collects data on yield, throughput and quality throughout the entire processing cycle.

- Yield and throughput of individual operators is monitored in real-time, enabling managers to make the necessary adjustments to ensure that the line operates at peak efficiency.

- Simple and ergonomic design makes it easy to clean and economical to maintain.

Tried and tested in the fish industry for decades, Marel's flowlines have also been welcomed in the meat and poultry industries with great success. We have installed over 160 processing lines worldwide.



1 INFEED STATION

The infeed station contains a static conveyor scale that weighs the raw material coming in.

2 CONVEYOR BELT

The line is equipped with one conveyor for infeed and outfeed of primary material. Having fewer conveyors facilitates cleaning.

3 PROCESSING STATION

The processing stations are built-in and located along the conveyor. They are equipped with arms that drive the poultry products into the infeed buffer.

The operator performs the intended operation, whether it is trimming or deboning, and places the processed piece in a buffer. The contents of the buffer are periodically released onto the conveyor.

The trim, skin and bones are dropped through a chute onto a secondary conveyor that lies beneath the line.



“ StreamLine allows us to monitor each operator and to use a bonus payment plan to reward the best performers. There's no question that added incentive translates immediately to higher yield and throughput.”

Gudmundur Bjornsson, Production Manager at Matfugl ehf. in Iceland

Benefits

StreamLine fully utilizes the capabilities of each employee and allows the best workers to shine.

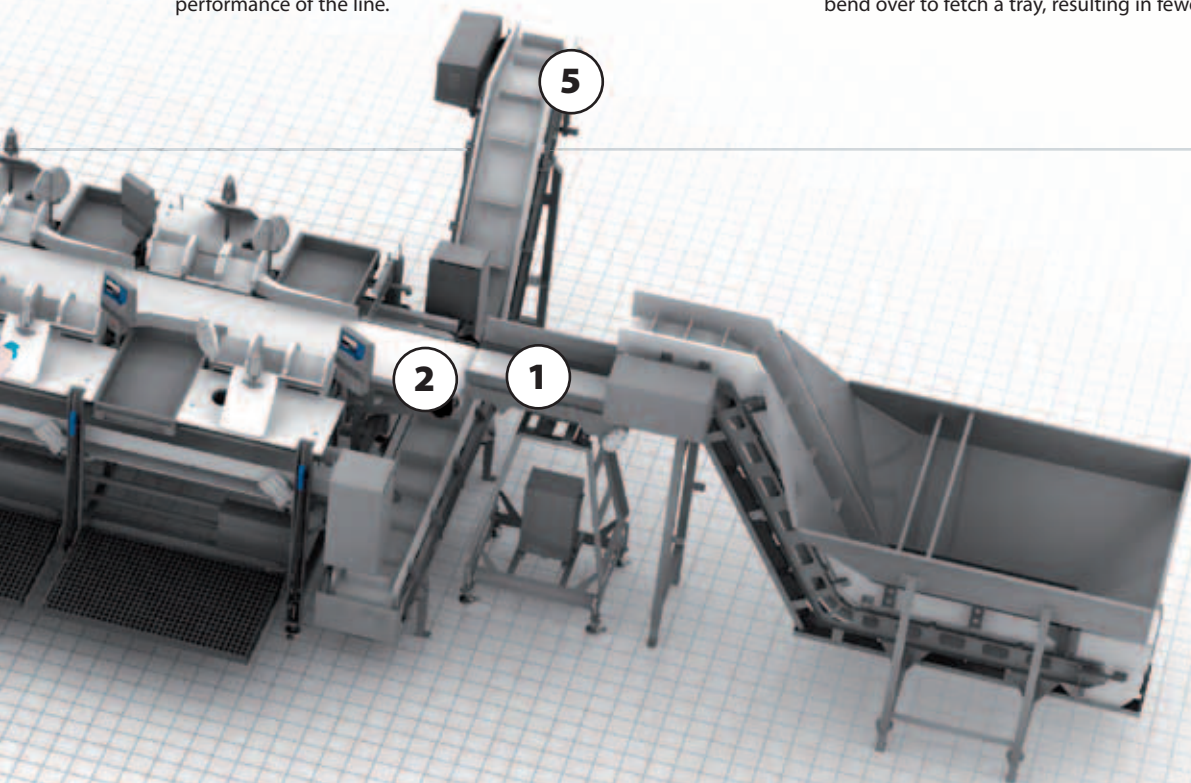
- Production speed is not dictated by the slowest worker on the line but is rather determined by the sum of the contributions of each operator.
- Individual monitoring of each operator allows managers to install bonus payment plans for added incentive. Operators can monitor their own performance and compare it to the average.
- Operators have greater independence. The flow of raw material to the processing stations is controlled, allowing operators to take breaks at times of their own choosing without it affecting the performance of the line.

Throughput and yield: Individual monitoring and the ability of operators to compare their own performance against the average is the most important contributing factor to increasing overall throughput and yield.

Quality: Random and anonymous on-line quality checks of each operator, combined with individual monitoring, result in higher value products.

Hygiene and economy: StreamLine's simple and hygienic design – with fewer conveyors and less steel than traditional flowlines – makes it extremely easy to clean and economical to maintain.

Ergonomy: Adjustable platforms and automatic infeed mean that employees no longer need to stretch to reach the raw material or bend over to fetch a tray, resulting in fewer work-related injuries.



4 OUTWEIGHING STATION

Processed pieces or portions are weighed at the outweighing station. From there, the product can be sent to the quality control station and/or several different processing or packing stations.

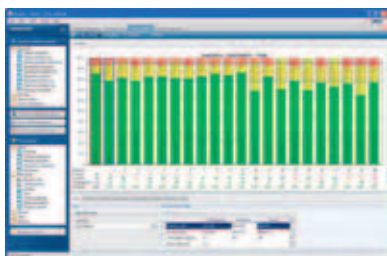
5 TRIM CONVEYOR

Secondary material, such as trim, skin and bones, are carried off by a conveyor to selected locations.



Innova ties it all together

Innova, the intelligent production management software, integrates seamlessly with StreamLine to ensure optimal performance.



Innova provides the complete IT solution for the modern food processor. It covers the entire value chain in the production cycle, from reception of supplies to product dispatch, providing all key performance indicators (KPIs) for each stage. Critical KPIs are closely monitored and controlled in real-time. These include: yields, throughput and efficiency, giveaway and loss of sales, quality, stock levels and movements and profitability.

There is also a built-in traceability mechanism at all levels, ensuring that all product information is registered throughout the entire production process, making recall easier if needed.

Innova can generate a variety of user-friendly reports.

Payback

StreamLine is cost-effective, with a short payback time, primarily due to three factors:

- With individual performance monitoring, processors can expect to see improvements in yield of between 2 to 4%.
- Throughput should increase by 15-30%.
- StreamLine is attractively priced since its simple and compact design makes it less costly to produce than conventional processing lines.

In most cases, payback can be expected to be achieved well within one year.



Marel

The world's leading manufacturer of high-tech equipment for the food processing industry.

We are innovative in everything we do and we provide outstanding new solutions and services to the food processing industry in order to create greater value for all our stakeholders.

For further information please visit
www.marel.com

