

Superflow *Energia Mk8*

Twin Belt

Type: Dantech FT/SFMK8/TB 350 - 1800 Series

FREEZING & TEMPERATURE DIVISION



- **Compact Unit**
- **Energy Saving**
- **Great Flexibility**
- **Fast Installation**

Type : Dantech FT/SFMK8/TB 350 - 1800 Series

The *Superflow*[®] *Energia Mk8* Freezer is specially designed for a great variety of flat and fragile products, such as: Burgers, Fish Fillets, Nuggets, Poultry fillets, Mussels, Shrimps, Diced Meat, Vegetables, fruits and Green Peas etc.

The freezer is easily adaptable for both the high speed vertical airflow, called *Superflow*[®] and the conventional high speed horizontal airflow, called *Arcticflow*[®]. This provides the user great flexibility to minimize the cost of freezing. The capacity will vary depending on the type of airflow, product load etc.

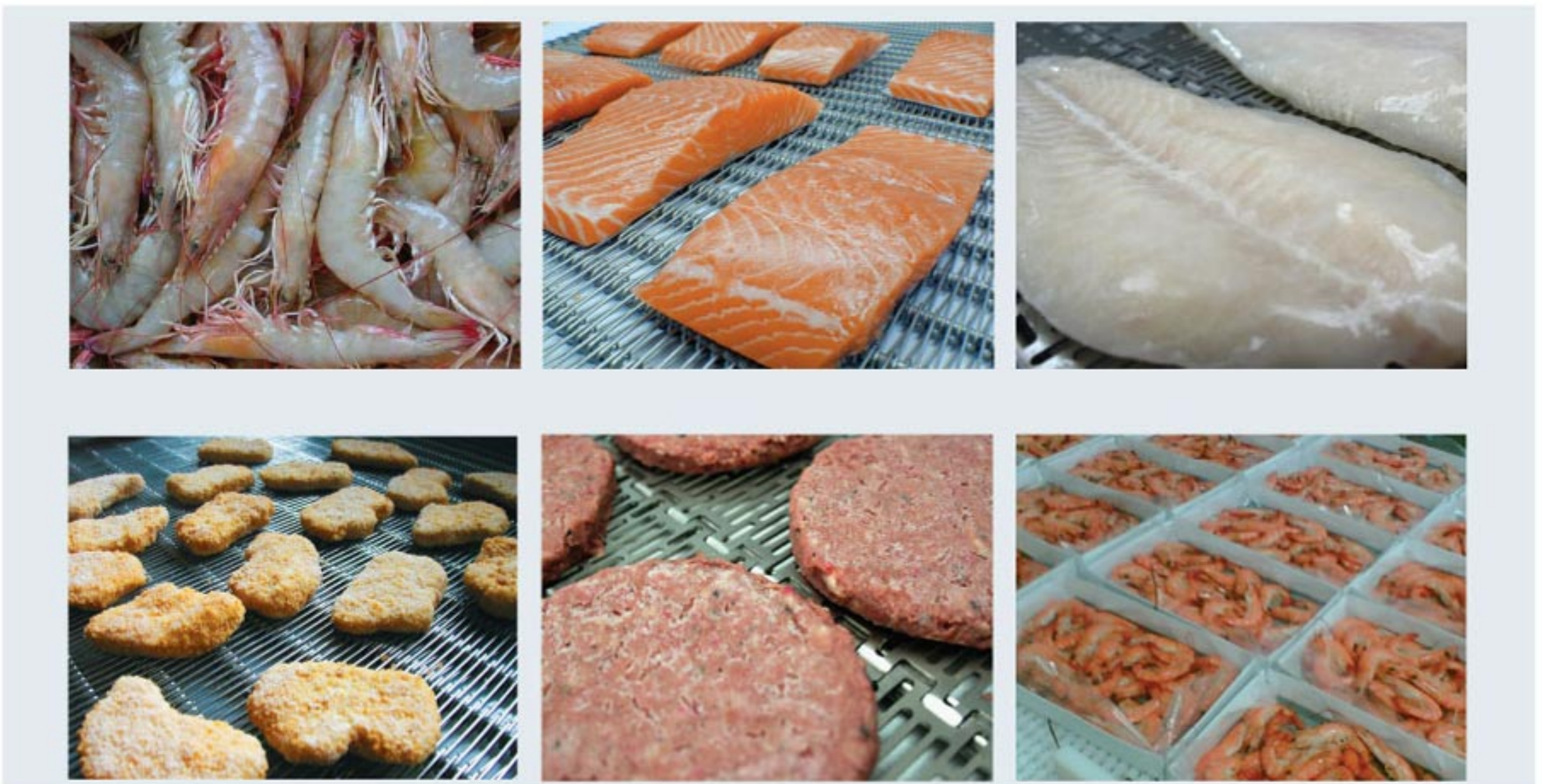
We offer the freezer with 4 different belt types. With special selection of the belt type, depending on products to be processed.

Both the *Superflow*[®] and the *Arcticflow*[®] airflow together with the ultra low temperature ensure a quick and homogenous freezing within a minimum of time. Thus ensuring a food quality finished product, with an equalized core temperature of min. -18° C.

The *Superflow*[®] *Energia Mk8* Freezer special features:

- Lowest energy consumption in the market
- Very small foot print
- Complies with the strictest hygienic demands from all well known institutions.
- Standard prepared for easy connection to CIP System.
- Very long running hours in between defrosting requirements.

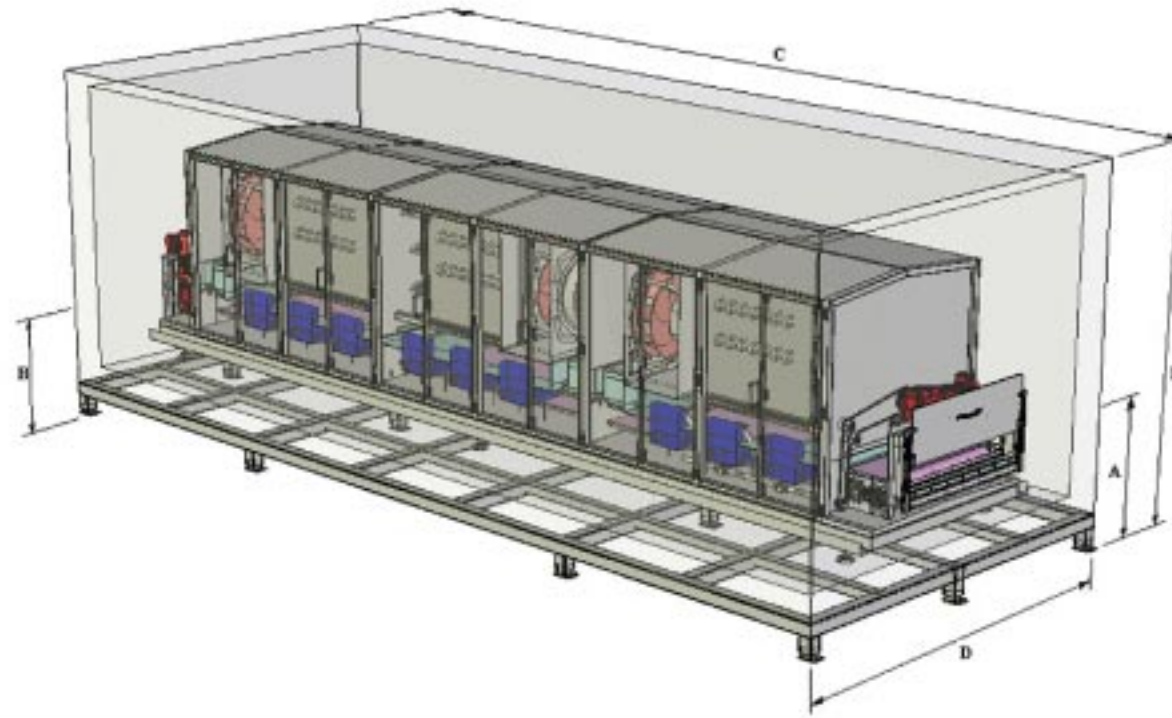
The freezer can be used as a stand-alone unit or as an integrated part of a fully automated processing line.



- Compact Unit
- Energy Saving
- Great Flexibility
- Fast Installation

SUPERFLOW ENERGIA Mk8 TWIN BELT

Type : Dantech FT/SFMK8/TB 350 - 1800 Series



The Superflow *Energia Mk8* Freezers are available in solutions ranging from 1 - 12 modules in both belt widths

| Superflow <i>Energia Mk8</i> Freezer Twin Belt - Dual Impingement | FT/SFM8 /TB/700/2/70 | FT/SFM8 /TB/700/4/140 | FT/SFM8 /TB/700/6/210 | FT/SFM8 /TB/700/12/420 | FT/SFM8 /TB/850/2/83 | FT/SFM8 /TB/850/4/166 | FT/SFM8 /TB/850/6/249 | FT/SFM8 /TB/850/12/498 |
|--|-------------------------|--------------------------|--------------------------|---------------------------|-------------------------|--------------------------|--------------------------|---------------------------|
| TECHNICAL DATA : | | | | | | | | |
| No. Of Modules | 2 | 4 | 6 | 12 | 2 | 4 | 6 | 12 |
| Belt Width (Effective) (mm): | 700 | 700 | 700 | 700 | 850 | 850 | 850 | 850 |
| Belt Width (Overall) (mm): | 750 | 750 | 750 | 750 | 900 | 900 | 900 | 900 |
| Belt Length (mm): | 5070 | 9390 | 13710 | 26670 | 5070 | 9390 | 13710 | 26670 |
| No. of belt : | 2 | 2 | 2 | 2 | 2 | 2 | 2 | 2 |
| Belt Speed (*) (m/min): | Adjustable | Adjustable | Adjustable | Adjustable | Adjustable | Adjustable | Adjustable | Adjustable |
| Product Height (Normal) (NP) (mm): | 0 ~ 125 | 0 ~ 125 | 0 ~ 125 | 0 ~ 125 | 0 ~ 125 | 0 ~ 125 | 0 ~ 125 | 0 ~ 125 |
| Product Height (High version) (HP) (mm): | 125 ~ 225 | 125 ~ 225 | 125 ~ 225 | 125 ~ 225 | 125 ~ 225 | 125 ~ 225 | 125 ~ 225 | 125 ~ 225 |
| Product Infeed Height (A) (mm): | 850 | 850 | 850 | 850 | 850 | 850 | 850 | 850 |
| Product Discharge Height (B) (mm): | 595 | 595 | 595 | 595 | 595 | 595 | 595 | 595 |
| Max. Length (C) (mm): | 5420 | 9740 | 14060 | 27020 | 5420 | 9740 | 14060 | 27020 |
| Max. Width (D) (mm): | 3500 | 3500 | 3500 | 3500 | 3800 | 3800 | 3800 | 3800 |
| Max Height (E) (mm): | 2700 | 2700 | 2700 | 2700 | 2700 | 2700 | 2700 | 2700 |
| Coolant Supply to Evaporator (*) (KW): | Varies | Varies | Varies | Varies | Varies | Varies | Varies | Varies |
| Max Evaporator Available (KW): | 70 | 140 | 210 | 420 | 83 | 166 | 249 | 498 |
| Suction Temp at Evaporator (°C): | -40 | -40 | -40 | -40 | -40 | -40 | -40 | -40 |
| Air Temperature (°C): | -35 | -35 | -35 | -35 | -35 | -35 | -35 | -35 |
| Cooling Medium : | R404A/R717/R22 | R404A/R717/R22 | R404A/R717/R22 | R404A/R717/R22 | R404A/R717/R22 | R404A/R717/R22 | R404A/R717/R22 | R404A/R717/R22 |
| Cooling Pump Flow Rate : | 4 to 5 times | 4 to 5 times | 4 to 5 times | 4 to 5 times | 4 to 5 times | 4 to 5 times | 4 to 5 times | 4 to 5 times |
| Total Power Consumption (Max.) (*) (KW): | 12.8 | 25.6 | 38.4 | 76.8 | 19.2 | 38.4 | 57.6 | 115.2 |
| Installed Fan Power (KW): | 18.4 | 36.8 | 55.2 | 110.4 | 27.6 | 55.2 | 82.8 | 165.6 |
| Power Supply (KW): | 22 | 40 | 58 | 114 | 31 | 58 | 86 | 169 |
| Voltage (V): | 3 x 400/50Hz | 3 x 400 / 50Hz | 3 x 400 / 50Hz | 3 x 400 / 50Hz | 3 x 400 / 50Hz | 3 x 400 / 50Hz | 3 x 400 / 50Hz | 3 x 400 / 50Hz |

Design:

- Cabinet : 125mm fully welded Stainless Steel Panels
- Conveyor : Stainless Steel Conveyor Frame & Belts
- Optional : Pre fabricated PU Panel Stainless Steel Surface or White PVC

PLC/Touch Screen Control Panel :

- Stepless control of belt speed
- Digital read out of freezing time
- Digital read out of air and evaporating temperature
- Digital control of stepless adjustments of plates
- Start/stop of belt
- On/off switch for light in tunnel

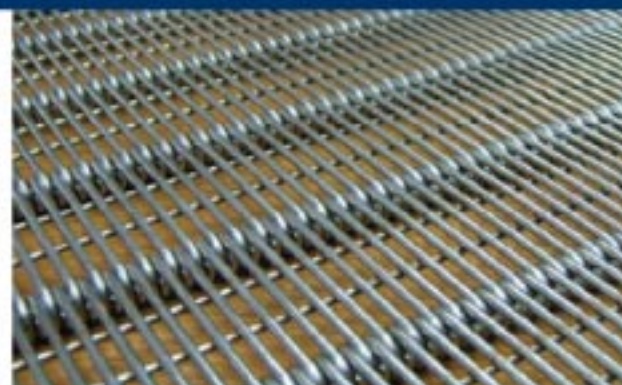
All above mentioned details are subject to change without notice !

(*) These parameters will be different depending on the Geometrical and Thermal Characteristic of Product

Different Belt Types for an *Energia Mk8* Tunnel Freezer



DTZ Belt



Stainless Steel Mesh Belt



DTZ Flat Modular Stainless Steel Belt



Plastic Modular Belt

Worldwide Service



Marel Australia
Unit 1,
53 Neumann Road
Capalaba Qld 4157
Australia
Tel: +61 7 3395 8044

Marel France
60 Avenue Paul Cezanne
BP 295
VANNES Cedex 56008
France
Tel: +33 (0) 2 97 46 49 46

Marel New Zealand
27c Kennaway Road
Woolston
Christchurch 8023
New Zealand
Tel: +64 3 381 8100

Marel Slovakia
Novozamocka 222
Nitra
Slovakia 949 05
Tel: +421 37 6530 741

**Marel U.K.
(Leicester)**
Feldspar Close
The Warrens Ind. Park
Enderby Leicester
LE19 4JS
United Kingdom
Tel: +44 (0) 116 284 3500

Marel Brazil
Rua Jose Tomasi, nº 634
Santa Felicidade
Curitiba, PR
82.015-630
Brazil
Tel: +55 41 3888 3400

Marel Germany
Hakenbusch 9
Osnabruck D-49078
Germany
Tel: +49 (0) 541 500 97-0

Marel Norway
Karvag
Averøy 6530
Norway
Tel: +47 715 17300

**Marel (Pty) Ltd
South Africa**
1st Floor, Fish Eagle Park 2
Loerie Street, Meyersdal
1447 Gauteng
South Africa
Tel: +421 37 6530 741

Marel Uruguay
Ramon Mansini, 3134
Montevideo 11300
Uruguay
Tel: +598 2 707 6230

Marel Chile
Bernardino 1057, Modulo 1
Flex Center, Loteo Industrial
San Andres, Puerto Montt,
Chile
Tel: +56 65 341 818

Marel Iceland
Austurhraun 9
210 Gardabaer
Iceland
Tel: +354 563 8000

Marel Poland
ul. Oplotek 29
Warszawa 01-940
Poland
Tel: +48 22 569 52 80

Marel Spain
C/Copernic, 2-4 Nave 1
Pol. Ind. Cami Ral
Gava Barcelona 08850
Espana
Tel: +34 936 36 35 93

**Marel USA
(Kansas)**
8145 Flint Street
Lenexa KS 66214
United States of America
Tel: +1 913 888 9110

Marel China
No. 36 Hong Kong Mid Road
Room 1108
Zhao Yin Tower of Cyber Port
Qingdao 266071
China
Tel: +86 532 8667 5567

Marel Ireland
Unit B2
Centrepoint Business Park
Dublin 12 Clondalkin
Oak Drive 12
Ireland
Tel: +353 142 982 06

Marel Portugal
Centro Empresarial "Lusoworld"
2710-335 Linho
Sintra Armazem 6 Rua Pe de Mouro
Portugal
Tel: +351 21 9241393

Marel Sweden
Norra Långebergsgaten 4
Göteborg 400 92
Sweden
Tel: +46 31 709 0707

**Marel USA
(Seattle)**
2001 West Garfield
Terminal 91, Pier 91, Building A-1
Seattle, WA 98119
United States of America
Tel: +1 206 781 1827

Marel Denmark
P.O. Pedersens Vej 18
DK - 8200 Aarhus N
Denmark
Tel: +45 89 304 444

Marel Italy
Via Leonardo da Vinci 9
San Rocco al Porto
Lombardy 26865
Italy
Tel: +39 0377 456065

Marel Romania
Tudor Stefan Street no.13
011655 Bucharest
Romania
Tel: +4 0314 253 114

Marel Thailand
2nd Flr., Ratchaphurk Bldg.
Bangkunkong, Bangkrui
Nonthaburi 11130
125/4 Moo 1, Ratchaphurk Road
Thailand
Tel: +66 2423 3656-9

Marel Vietnam
80 Nguyen Dinh Chieu Street
Ho Chi Minh City Q1
Vietnam
Tel: +84 (8827) 4462

Marel Salmon A/S
Bøgildsmindevej 3
9400 Nørresundby
Denmark
Tel: (45) 9892 1511

Marel Netherlands
Hogenwerf 18
Roosendaal
4704 RV
The Netherlands
Tel: +31 0165 523030

Marel Russia
Proezd No.607, bld.30
Office 602
Moscow 123458
Russia
Tel: +7 (495) 228 0550