

Innova Manual Trimming

Trimming for manual lines

A minimal investment for a large scale yield and monitoring system



Key benefits

- Monitors product input and output, to and from individual trimmers, to maximize yield and throughput.
- Compares production figures to targets to instantly pinpoint production problems.
- An effective management tool.
- Manual line configuration and control.
- Allows evaluation of raw material from suppliers.
- Allows immediate intervention and corrective actions to minimize losses.
- Continuous monitoring of throughput and yield by trimmer and by line.
- Storage of lot/batch data for customer verification of batch results.
- One centralized storage location for all trimming programs.
- Integrated solution support for other Innova modules, such as QC and Box Labelling.
- Integrated traceability support.
- Rich export capabilities: HTML, PDF, Excel and Text.
- Sends reports via local email client.
- Supports multiple trimming lines.



Innova closely monitors and controls critical KPIs in real-time, including: yields, throughput and efficiency, giveaway and loss of sales, quality, stock levels and movements, traceability and profitability.

Yield



Throughput

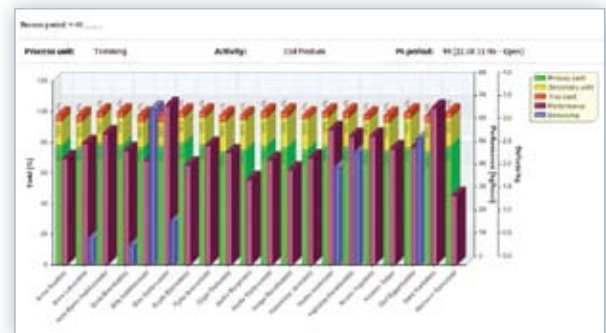


Line details w/ products report

Process unit: **Trimming**
 Activity: **Cod Medium** P# period: **49 (22:06 11:46 - Open)**

Employee	Input (kg)	Primary (kg)	Secondary (kg)	Trim (kg)	Hours	Defects /kg	Prod. yield	Oven. yield	Throughp. kg/hour
Anna Arnadóttir	14.2	11.2	2.3	0.6	00:17		78.3	84.4	46.4
Anna Línadóttir	15.4	12.7	2.6	0.7	00:17	0.36	77.4	81.2	52.8
Ásta-Kristín Haraldsdóttir	17.4	14.0	2.6	0.6	00:17		83.5	86.8	51.2
Drífu Brjánsdóttir	14.7	11.6	2.6	0.5	00:17	0.40	78.9	86.8	49.7
Elín Arnadóttir	14.0	10.8	2.3	0.6	00:17	0.23	77.1	83.0	49.3
Erla Stefánsdóttir	20.8	16.7	3.4	0.9	00:17	0.91	79.7	85.5	63.4
Eygló Björnsdóttir	13.2	10.6	2.2	0.4	00:17	0.60	83.3	87.2	45.8
Fjolla Sveinsdóttir	15.8	12.6	2.7	0.6	00:17		79.2	86.2	52.1
Gígja Stefnisdóttir	15.6	11.6	3.0	0.7	00:17		74.4	81.6	48.0
Gudni Bergmann	11.1	8.5	2.2	0.3	00:17		75.2	84.7	50.1
Heida Stefánsdóttir	13.6	10.6	2.4	0.5	00:17		77.9	83.8	49.3
Helga Rúnadóttir	12.6	9.7	2.4	0.5	00:17		77.6	86.0	49.2
Hildrún Jónadóttir	14.0	10.6	2.8	0.3	00:17	0.80	78.7	86.7	48.8
Hulda Sveinsdóttir	17.8	14.8	3.0	0.7	00:17	0.22	78.2	86.8	58.8
Ingólfring Haraldsdóttir	16.7	13.8	3.0	0.7	00:17	0.50	79.8	85.8	54.8
Kristín Ingadóttir	16.7	12.7	3.3	0.5	00:17		75.8	85.8	54.4
Kristín Seljan	15.7	11.8	2.8	0.7	00:17	0.80	75.2	83.8	51.4
Ólaf Eggertsdóttir	15.3	11.8	2.9	0.7	00:17	0.80	77.1	86.1	51.3
Sara Karlsdóttir	21.2	15.7	4.1	1.8	00:17		74.1	81.8	60.0
Steinunn Guðadóttir	9.0	7.0	1.6	0.3	00:17	0.80	77.8	85.8	50.1
Total	307.0	237.8	54.7	13.8	05:47	0.88	77.3	85.1	50.4

Line details graph

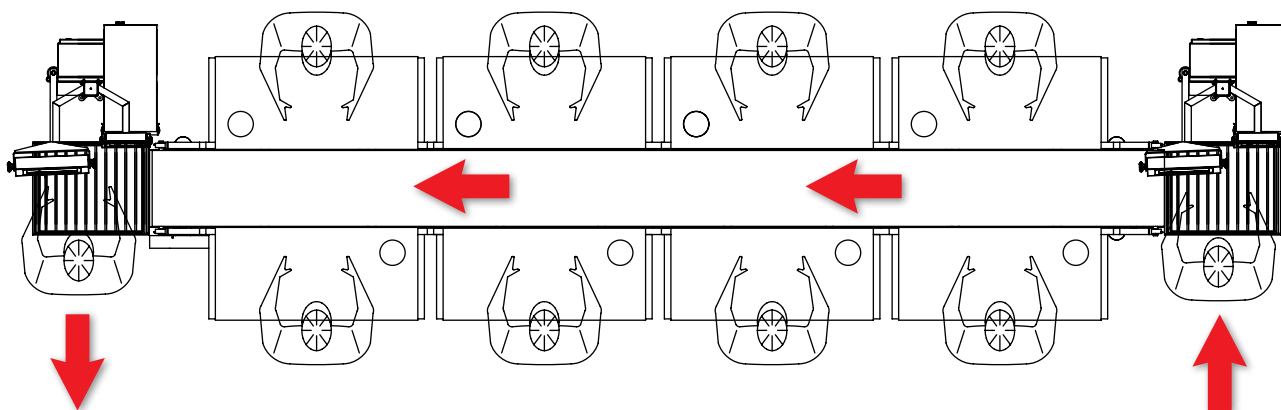


The example below shows how a basic trimming table can be fitted with an input and output scale to track employee yield, throughput and performance in real-time.

How it works

1. The system utilizes one input scale and one output scale per trimming line.
2. The operator activates the preferred trimming program, either on the scale itself or in the production office.
3. Employees are logged into a position within that table configuration at the Innova trimming line dashboard and/or at the input scale on the line.
 - Optional ID tags can be used to allow employees to log into a position at the scale terminal on the production floor or using an RFID reader at the station.
4. Each trimming station is equipped with an ID card used for output product registration.
 - The ID can be iButton or RF ID
5. Once a trimmer has completed his work, he then places the finished product into a tray containing his station ID along with the ID from the input scale.
6. The operator at the output scale puts the tray on the scale, scans the station ID to get the employee information, scans the ID from the input scale for the input weight and selects the corresponding output product from a list that is displayed. The product is then weighed and recorded and the Innova system is updated with the current yields and throughput information.

Manual trimming process flow

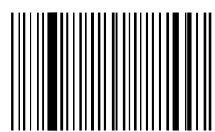


Register output product

- Read station ID
- Read input weight ID
- Select product
- Record

RFID supported

- Station ID



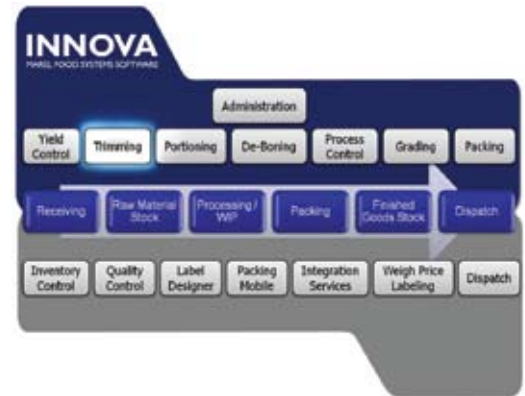
100 1965 2009 200

Register input product

- Activate supplier
- Assign production LOT
- Select trimming program
- Select input product
- Record
- Deliver product

Overview

- Innova Trimming is the Innova module used to control and monitor trimming lines.
- Innova is a software program designed to manage and administer the production process in the food production industry.
- Innova Trimming involves setting up activities to define what products are produced on the trimming line and where to send the products for further processing or packaging.
- Innova Trimming also provides detailed information on all key trimming data. The system monitors the individual performance and utilization of each trimmer. Targets and criteria can be established in order to identify what constitutes a good or poor performance in this regard. All the information can be displayed in real time and in reports.



Innova applications that the trimming line supports:

Red meat industry	Poultry industry	Fish industry	Pork industry
<ul style="list-style-type: none"> • Fresh raw material pre-trim • Frozen bone-in pre-trim • Basic trimming 	<ul style="list-style-type: none"> • Fillet trimming • Breast trimming • Deboning • Basic trimming 	<ul style="list-style-type: none"> • Fillet trimming • Basic trimming 	<ul style="list-style-type: none"> • Deboning • Trimming

Technical remarks

Hardware	
Server operating system	Windows Server 2000 Windows Server 2003
Client operating system	Windows XP, Vista
Database support	
Database used	SQL Server 2005 Express, Workgroup, Standard and Enterprise editions
Device support	
Scales	Marel M3000-A571 product and input scales Marel M2000-A72 product scales Marel M2000-A73 input scales Marel M2200-PO2 trim/waste hoppers Marel M2000-P72 trim/waste hoppers
Terminals	Marel M2200-PO2 manual registration terminals Marel RT220 information terminals
Processing lines	Trimming lines for poultry, red meat, salmon, and whitefish
Other requirements	
Software	Innova application framework

RETURN ON INNOVATION
www.marel.com/innova

