

# Trace and manage using one screen

MANAGERS from Icelandic processing factories say that Marel Food Systems' Innova management system allows an overview of production on one screen and provides real-time traceability data at the user's fingertips.

Omar Enoksson, factory manager of Visir hf, reports: "We are very pleased with the new software and the service we have been receiving.

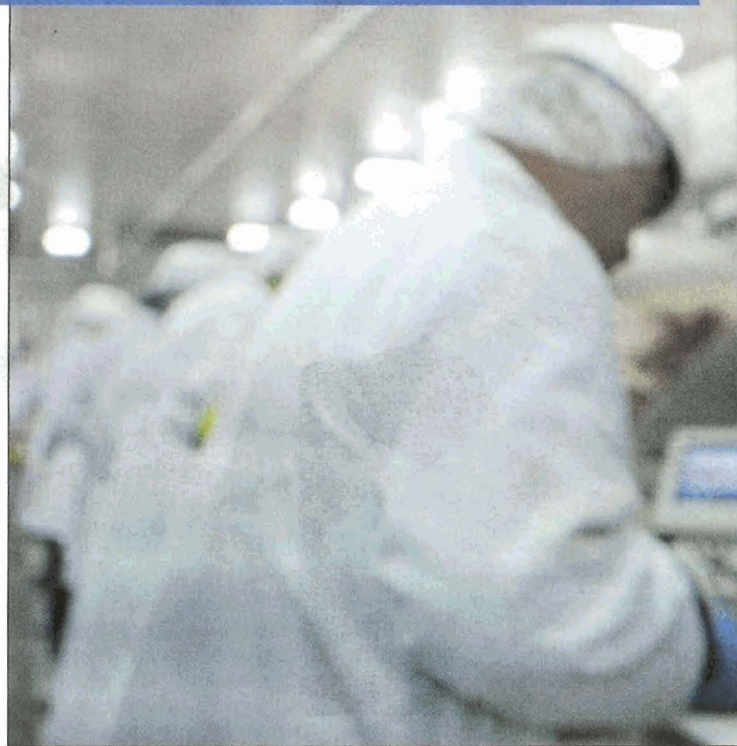
"Now we have more time for management and no longer have to spend time collecting and arranging data. It is also extremely convenient for us to have traceability information readily available."

Hermann Stefánsson, Skinney hf's production manager, was the first to take up the system.

"Innova has given us the insight we need into our production patterns, and we now have better control of our inventory, production capacity and utilisation. More importantly, all the data is in one place, saving valuable time."

Innova consists of individual program modules working together to create a total processing system. These individual modules control all processing steps, including: weighing, grading, portioning, deboning, trimming, inventory and dispatch.

There is a built in traceability mechanism at all levels, ensuring that product information is registered throughout the whole production process.



A factory manager can monitor input and output from the one screen of Marel Food Systems' Innova system.

The technology is built on the software development experience of Marel Food Systems' four global brands: AEW Delford, Carnitech, Marel and Scanvaegt.

It is designed as a replacement for previous software systems from the group, such as Marel's MPS, Scanvaegt's Multiflex and AEW

Delford's Mercury production software.

Innova is designed to be compatible with all Marel Food Systems machinery.

The system is designed to meet the changing needs of processors, who must have traceability data, connections with ERP systems and

flawless communication between factories worldwide.

Björn Thorvaldsson, Marel software product manager, says the system's development was based on wide research, customer needs analysis and close co-operation with clients.

He adds: "We have not only taken all existing and emerging needs into

consideration, but designed the software in a modular fashion which makes it flexible and easy to use.

"Innova provides processors with real-time information on all aspects of processing and connects easily to existing ERP systems, bringing direct control into the hands of management."

